

DESIGNER / GENERAL NOTES:

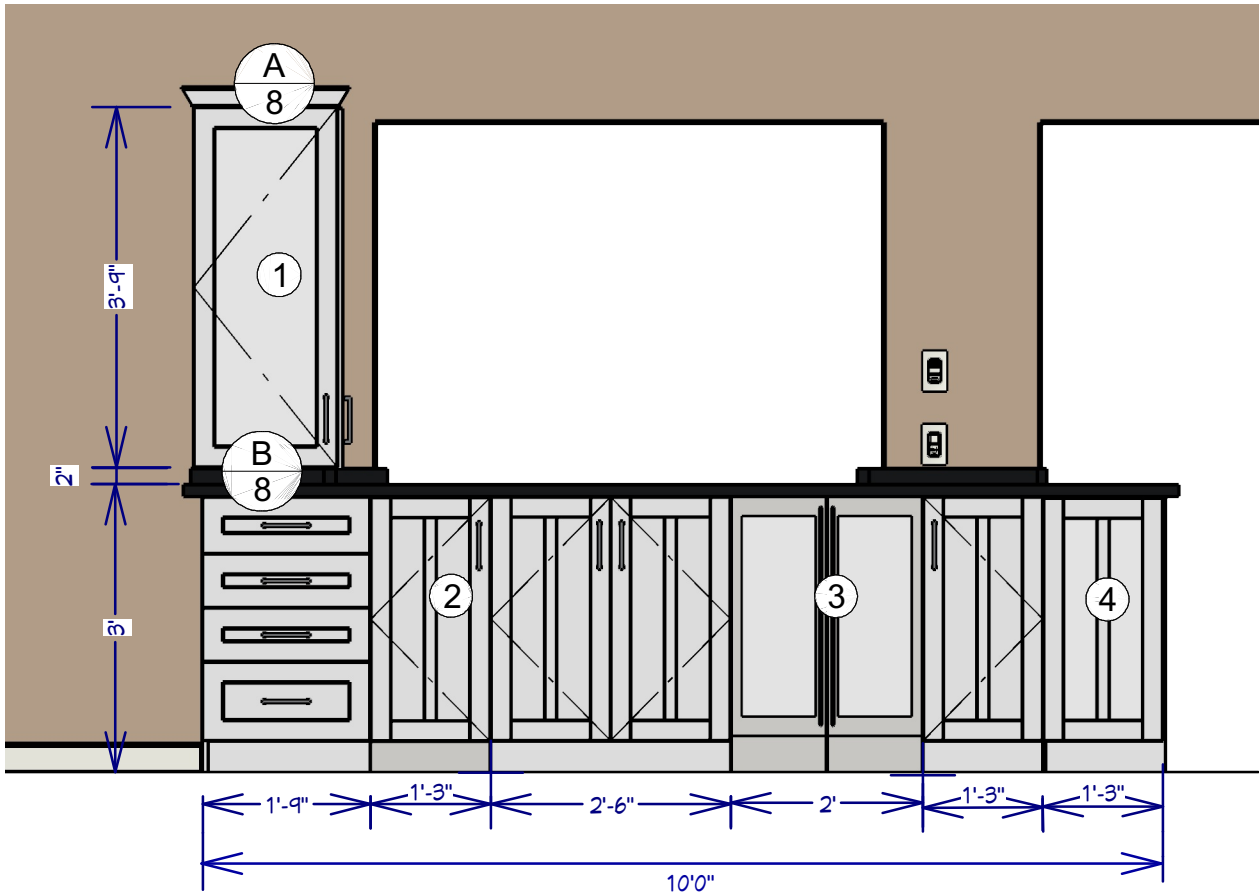
Do not scale off this drawing. No responsibility can be taken with any errors found by measuring off this drawing.

All dimensions are given in good faith and believed to be correct. If in doubt, please consult the designer or the on-site carpenter.

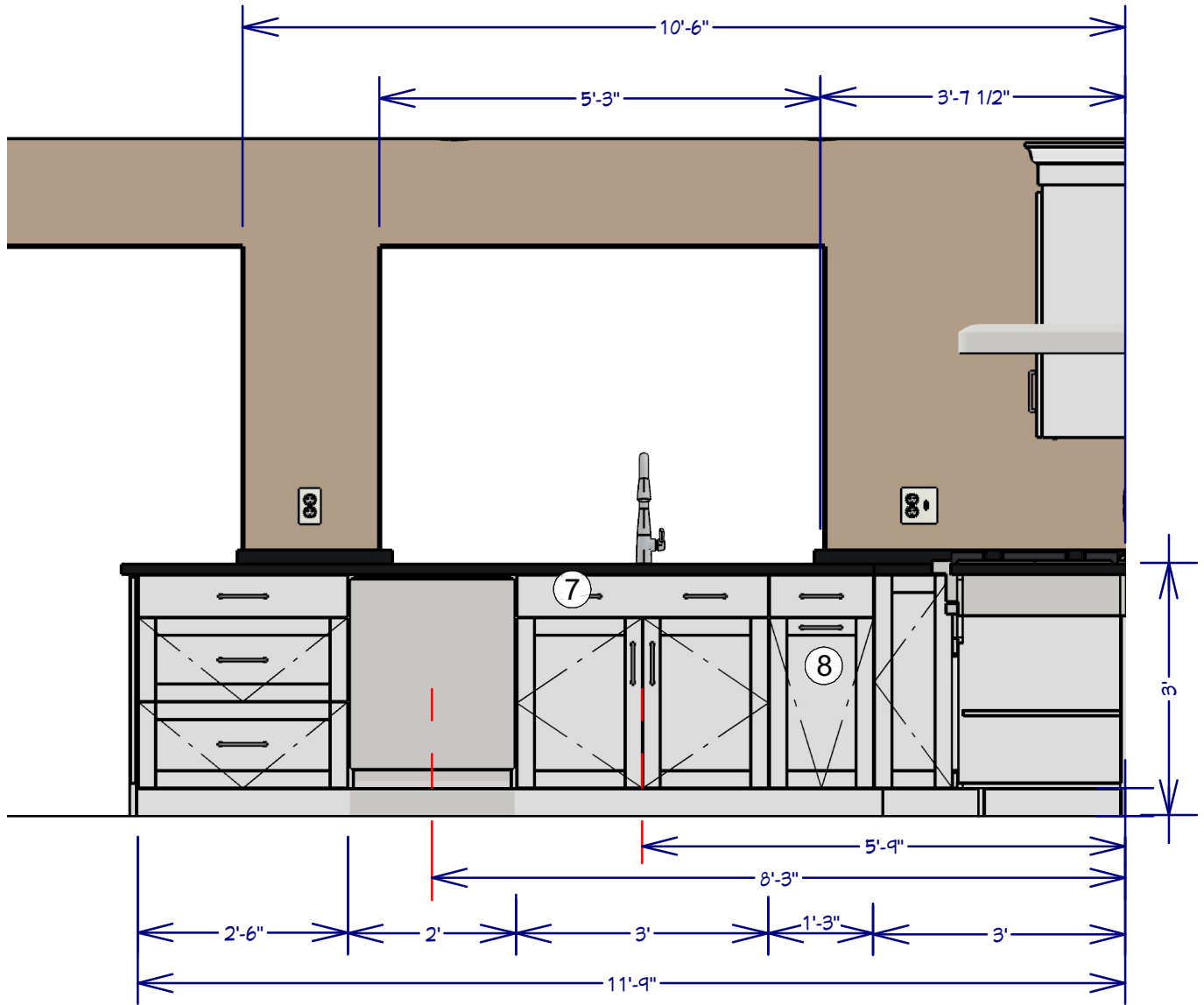
Contractors and subcontractors shall assume all responsibility for conforming to the Codes and Regulations of the enforcing body.

CABINETRY LEGEND:

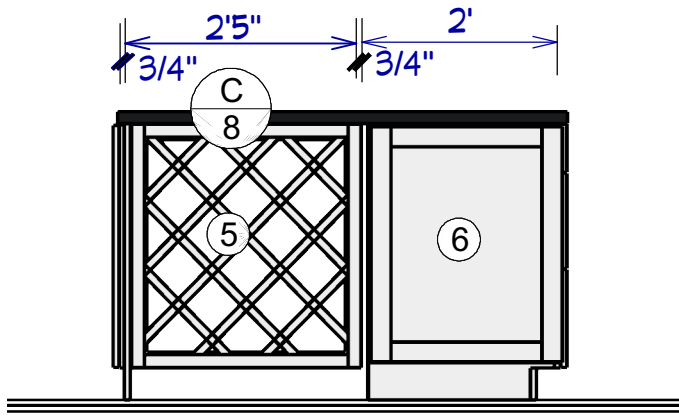
①	Glass door (front and right side) upper cabinet, elevated 2" from countertop. See details A & B, page 8.
②	Scottsman icemaker w/cabinetry front panel. Level to 1/8" from top.
③	24" wine cooler
④	Decorative panel, attached (to be ordered post-installation)
⑤	Wine bottle storage. See installation detail C
⑥	Decorative side panel, factory installed
⑦	Tilt down sink base front panel, with stainless storage tray.
⑧	Double trash cabinet
⑨	Spice storage wall cabinet
⑩	3-shelf pull out base cabinet
⑪	Rangetop cutout on-site ..see specification in Appliance section of jobsite binder.



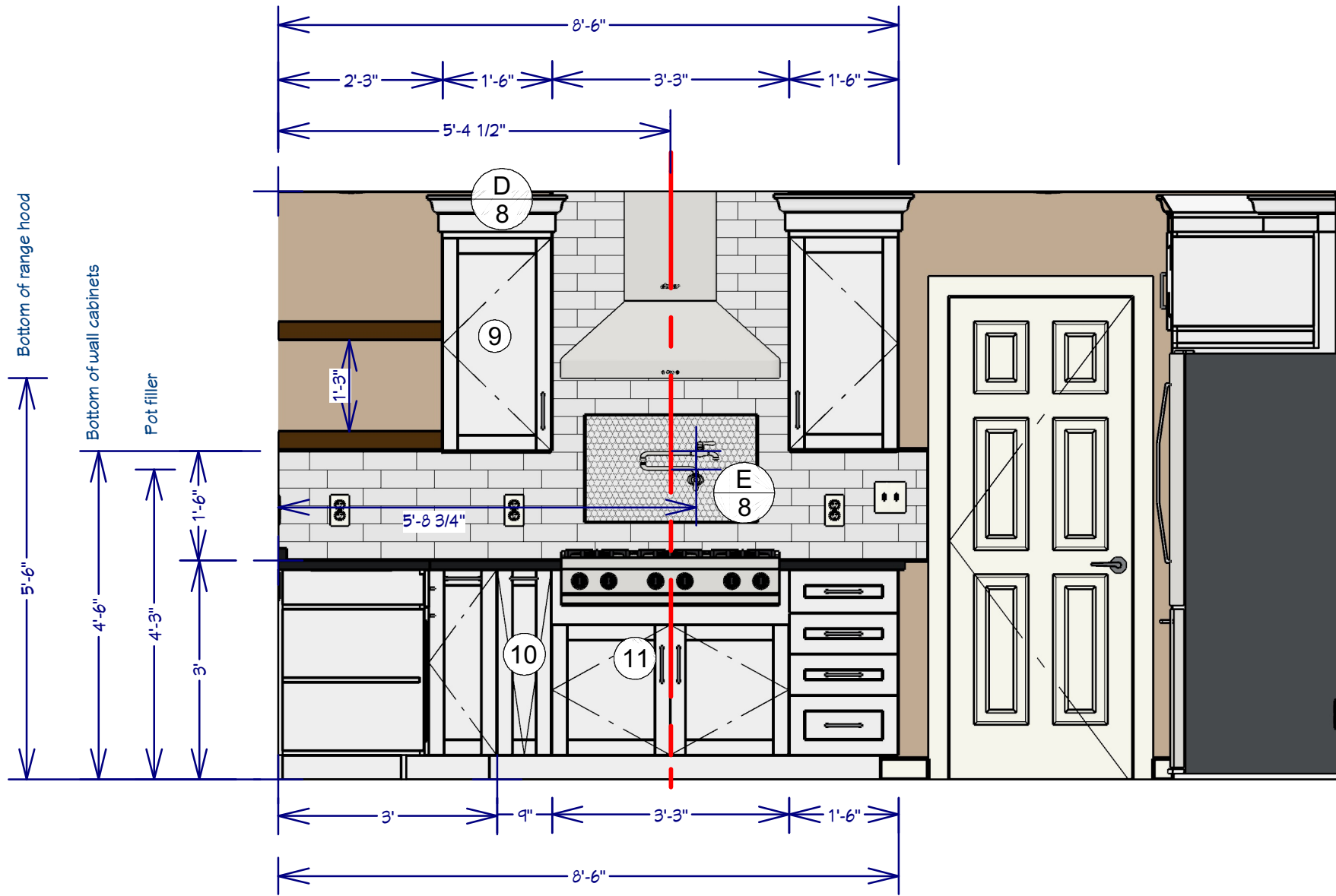
E1 DRY BAR ELEVATION



E3 SINK WALL ELEVATION



E2 WINE STORAGE



E4 RANGE TOP WALL ELEVATION

NO.	DESCRIPTION	BY	DATE

SHEET TITLE: CABINETRY

PROJECT DESCRIPTION: GOLD residence Kitchen remodeling

DRAWINGS PROVIDED BY: Gabriela Matuchova 443-467-4005 2690design@gmail.com

DATE: Nov '20

CAD FILE: Gold Final

SHEET: 6 of 8