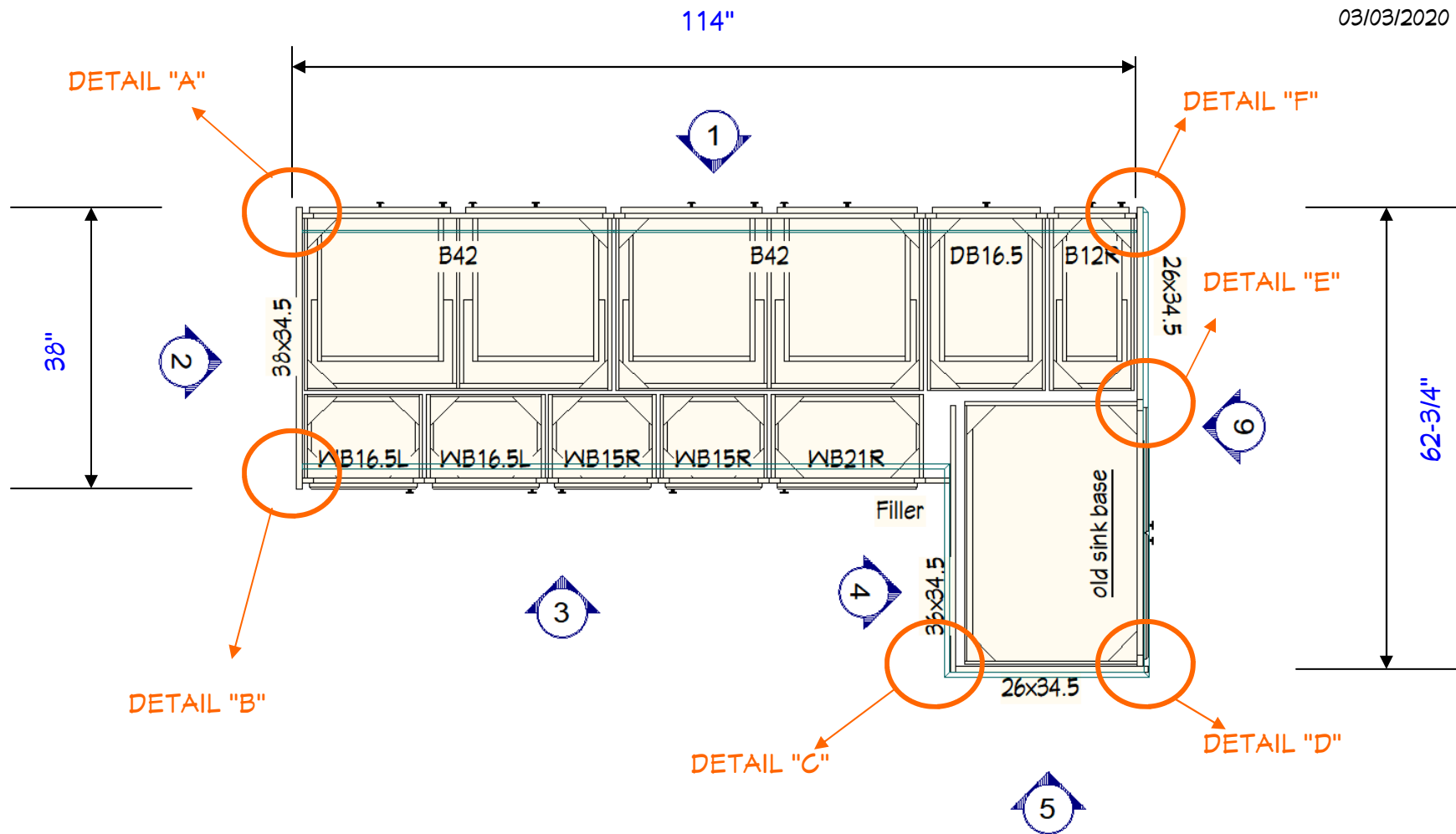


03/03/2020



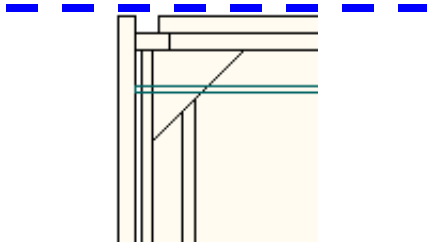
FRICKER RESIDENCE

HAUS 2690 DSGN
GABRIELA MATUCHOYA
443-467-4005



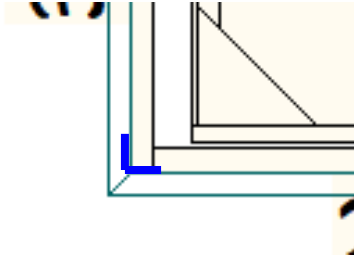
DETAIL "A"

Side panel pulled forward so the edge is flush with the edge of cabinet doors



DETAIL "C"

Panels to be mitered OR use corner molding BUT allow for decorative toekick trim to wrap around—miter.



DETAIL "F"

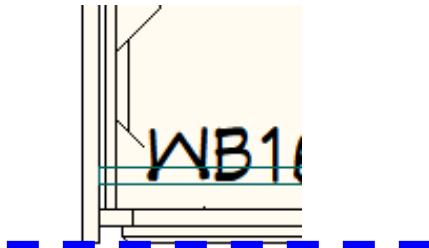
03/03/2020

Side panel pulled forward so the edge is flush with the edge of cabinet doors



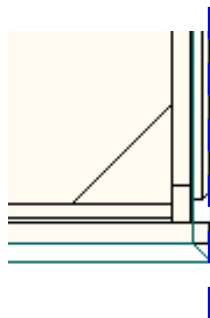
DETAIL "B"

Side panel pulled forward so the edge is flush with the edge of cabinet doors



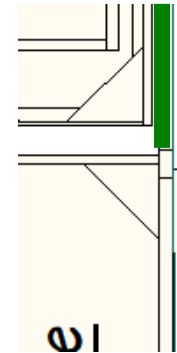
DETAIL "D"

Side panel pulled forward so the edge is flush with the edge of cabinet doors



DETAIL "E"

Side panel installed flush with frame of the sink base cabinet (which is to have flush toebase) - see perspective drawings



FRICKER RESIDENCE

HAUS 2690 DSGN
GABRIELA MATUCHOYA
443-467-4005



VIEW 1

03/03/2020

Side panel pulled forward so the edge is flush with the edge of cabinet doors, see detail "F"

Side panel pulled forward so the edge is flush with the edge of cabinet doors, see detail "A"

See detail "G"

TBT toekick trim boards

VIEW 2

Side panel not to be trimmed, may need to create space between cabinets to accommodate

VIEW 6

36" sink base, create flush toebase

Deco toekick trim boards, on flush toebase and panel, furniture style look

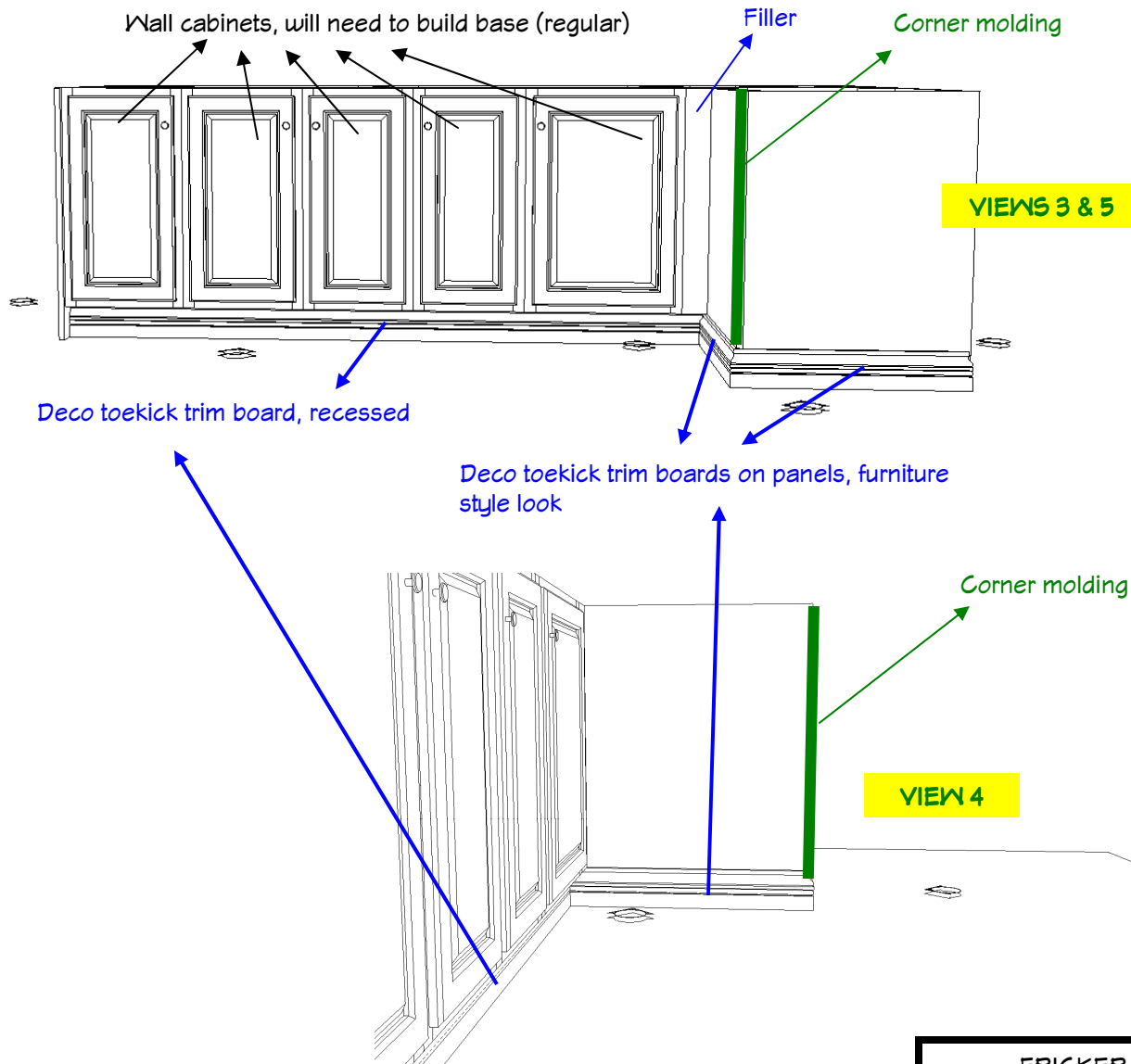
Detail "G"

FRICKER RESIDENCE

HAUS 2690 DSGN
GABRIELA MATUCHOYA
443-467-4005



03/03/2020



FRICKER RESIDENCE

HAUS 2690 DSGN
GABRIELA MATUCHOVA
443-467-4005

