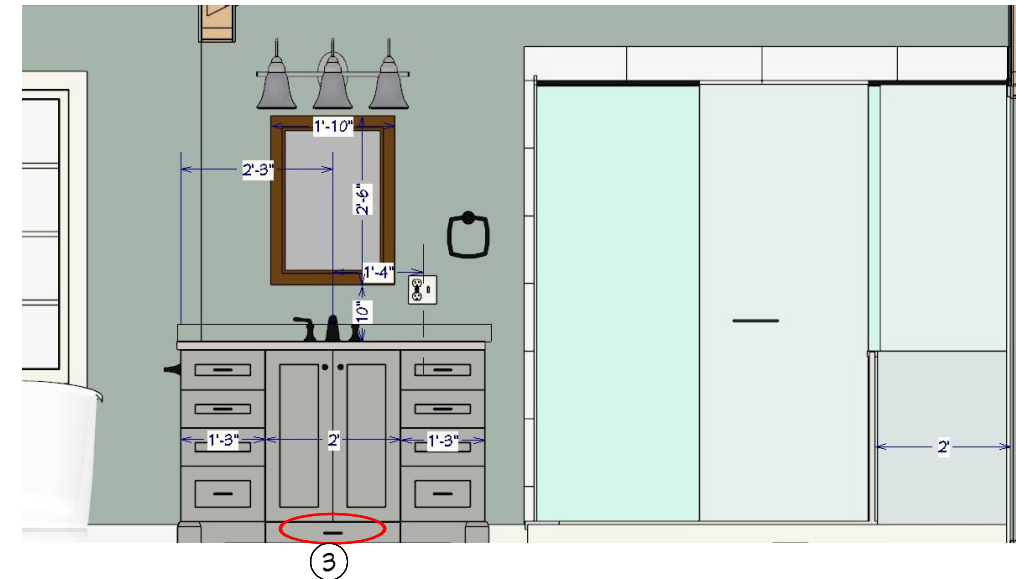
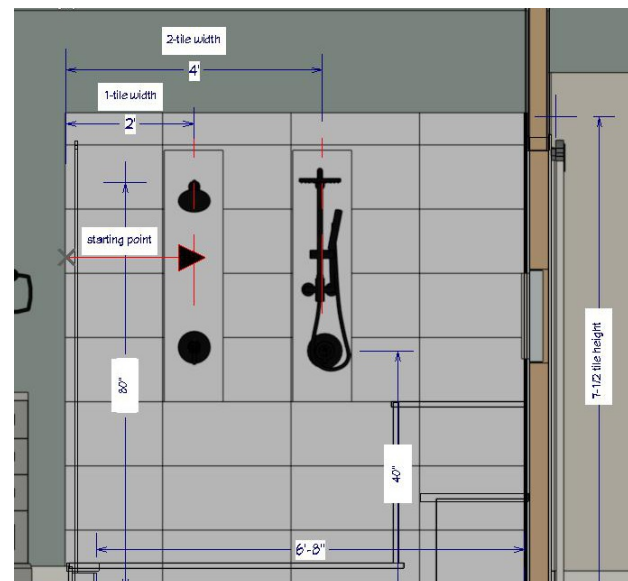


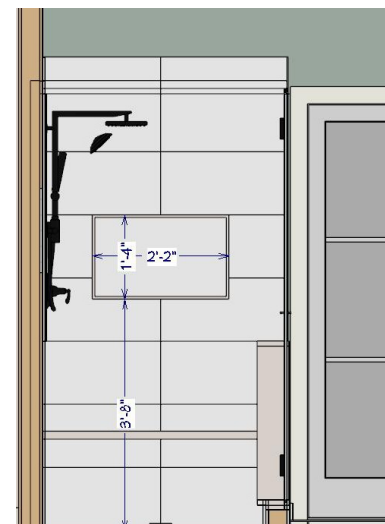
E1 LYNN VANITY ELEVATION



E2 ADAM VANITY ELEVATION



E3 SHOWER ELEVATION



- ① Electrical outlet in the back of the lift-up cabinet.
- ② Electrical outlet in the pullout, hair appliances drawer.
- ③ Toekick drawer - no plumbing through the floor !

PLUMBING & ELECTRICAL NOTES:

See Mechanical Plans and jobsite binder for details.
Please call the DESIGNER with any questions.